

Where, O grave, is your victory?

1 Corinthians 15:35-58
Ben Slee

Intro

♩ = 79 (C) (G) (D) (Em) (C) (D)
D \flat A \flat E \flat Fm D \flat E \flat



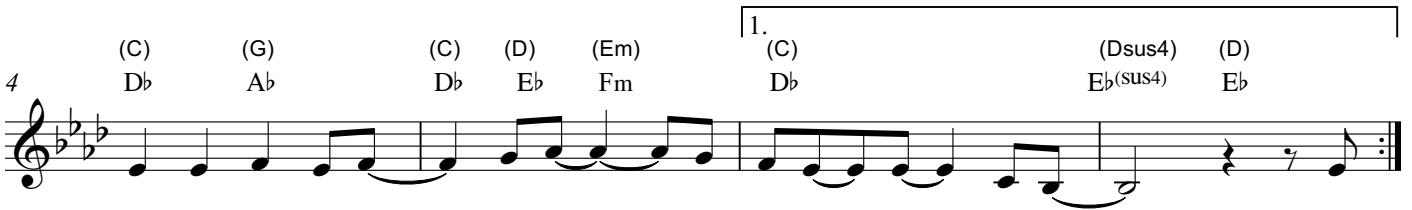
1. Through
2. Be -

V1 + 2

(C) (G) (D) (Em) (C) (D)
D \flat A \flat E \flat Fm D \flat E \flat

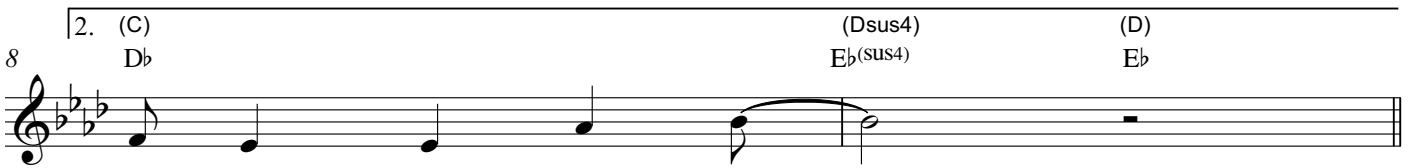


all life's sor - rows and de spairs I will not be moved when
cause Christ died at Cal - va - ry, sin has on me no claim Be -



(C) (G) (C) (D) (Em) 1. (C) (Dsus4) (D)
D \flat A \flat D \flat E \flat Fm D \flat E \flat (sus4) E \flat

fac - ing death I need not fear I have this hope se cure:
cause He o - ver came the grave with 2. Be -



2. (C) (Dsus4) (D)
D \flat E \flat (sus4) E \flat

Him I will be raised.

Chorus

10 (G) (D/F#) (Em) (C) (Dsus4) (D)
A \flat E \flat /G Fm D \flat E \flat (sus4) E \flat



Where, O grave, is your vic - to - ry? Where, O death, is your sting? E -

